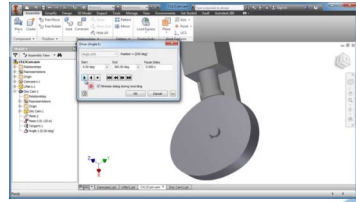
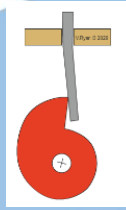


Year 8 Learning Journey



Design the cam and moving parts of their Automata using CAD.

CAD / CAM



How a cam and shaft work

How could we improve the end product.

Product evaluation

Accepting constructive criticism

End



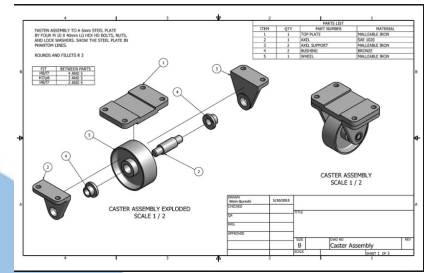
Using templates and jigs to guarantee accuracy

Quality Control

Measuring and testing component parts

Design and make an automata

Automata Practical



Use of PVA glue / glue gun to assemble



What is a G.A. Drawing and how do we read it?

General Assembly Drawing

Dimensions, materials, assembly, joining techniques

How are manufactured materials made?

Strength and weaknesses of manufactured materials

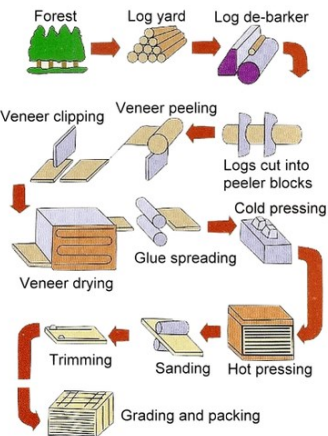
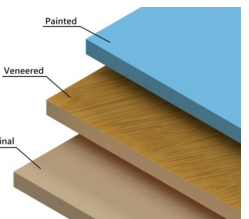
Manufactured Materials

Specific manufactured materials

What are the uses of manufactured materials?

Start

What is a manufactured material and why do we use them



Teachers notes..... The work is planned in eight week blocks which are delivered over the academic year. Each block develops knowledge (materials, structures, environment) and skills (hand tools, machinery, CAD/CAM) which will be reinforced throughout the year.

